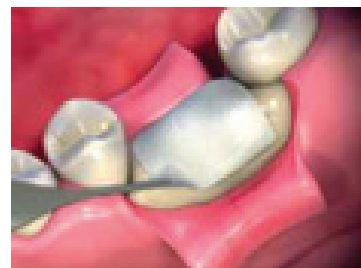


**Biongraft Resorbable Barrier Membrane** specifically engineered for periodontal restorative surgeries and assists in the regeneration of bone and periodontal support tissues.

Fabricated from a biocompatible and bioresorbable medical grade poly(lactic acid) based synthetic polymer with a long history of safe medical use.

### Product Features

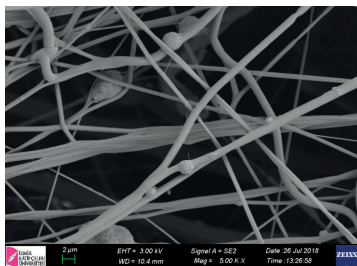
- Fully resorbed after 15-20 weeks after implantation
- Contains no tissue of human or animal origin therefore carries no risk of disease transmission.
- Prevents fibrous tissue growth in bone area
- No requirement for removing membranes due to complete bioresorption



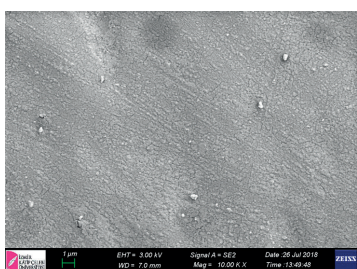
Application of **Biongraft Dental Barrier Membrane**

# BioNgraft™

## Dental Resorbable Barrier Membrane



Exterior side of **Biongraft Dental Barrier Membrane** compose of non-porous poly(lactic acid) (PLA) based film to prevent epithelial cells and fibroblast migration.



Interior side of **Biongraft Dental Barrier Membrane** compose of non-porous poly(lactic acid) (PLA) based film to prevent epithelial cells and fibroblast migration.

### Indications

- Ridge augmentation for implant insertions
- Alveolar ridge preservation after tooth extractions
- Sinus elevation procedures
- Infrabony defects
- Treatment of recession defects
- Furcation defects

### Specifications

**BioNgraft™**  
Resorbable Barrier Membrane

REFERENCE CODE	DESCRIPTION	VOLUME	PACKAGING
TBGM1520	Barrier Membrane	15X20 mm	1 unit/Box
TBGM1525	Barrier Membrane	15x25 mm	1 unit/Box
TBGM2020	Barrier Membrane	20x20 mm	1 unit/Box
TBGM2025	Barrier Membrane	20x25 mm	1 unit/Box
TBGM2030	Barrier Membrane	20x30 mm	1 unit/Box
TBGM3040	Barrier Membrane	30x40 mm	1 unit/Box
TBGM2530	Barrier Membrane	25x30 mm	1 unit/Box



Produced Exclusively for

**EOS**  
MEDICAL SOLUTIONS

23, Alexander Malinov Blvd,  
2nd Floor, of.75, 1729,  
Sofia, Bulgaria  
Email: info@eosmed.eu  
Website: www.eosmed.eu  
Tel: +359878737006