

# BioNgraft™

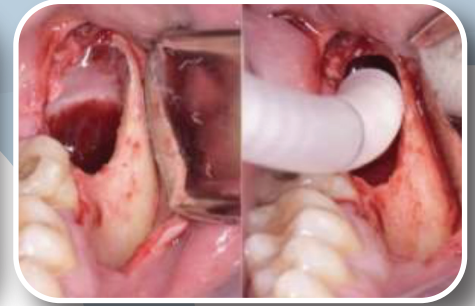
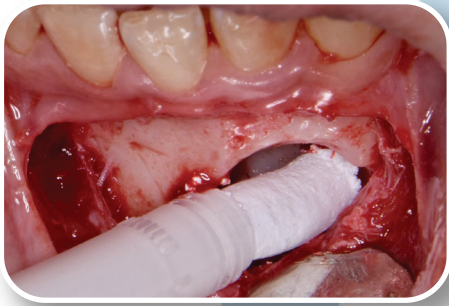
## Injectable Putty



- Ready to Use
- 100% synthetic
- Osteoconductive
- Biodegradable

# BioNgraft™

Injectable Putty



## Composition

**Biongraft Putty** is an injectable and formable paste bone graft based on hydrogel and Beta tricalcium phosphate ( $\beta$ -TCP), including  $ZrO_2$  nanoparticles for antibacterial efficacy.

## Product Features

- **Ready to Use**

Pre-loaded in a convenient applicator, syringe ready for direct placement in the defect. Easily molded by hand as needed. Requires no mixing.

- **%100 synthetic**

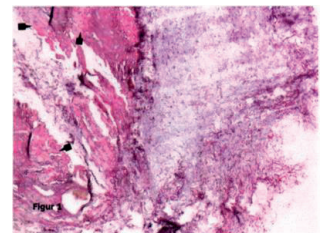
Contains no tissue of human or animal origin therefore carries no risk of disease transmission.

- **Osteoconductive**

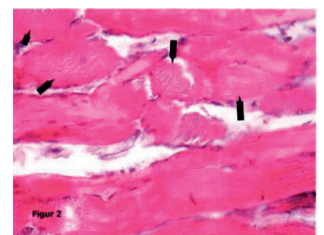
Provides a scaffold for new bone. Highly interconnected porosity with excellent mechanical resistance.

- **Biodegradable**

With its optimized porous structure and chemical composition, our products are suitable for the continuous remodeling cycle of healthy bone.  $\beta$ -TCP resorbs over time and being replaced with bone during the healing process.



Osteoid formation, 2 months after implantation of BioNgraft Putty in skeletal muscle



## Indications

- Alveolar bone regeneration
- Lateral and Crestal Sinus Augmentation
- Extraction (with or without implant placement)
- Intraosseous defects
- Guided bone regeneration (GBR)
- Socket Grafts

### General procedure of Biongraft Putty in sinus lifting, lateral augmentation, and socket grafting

#### A Lift a flap

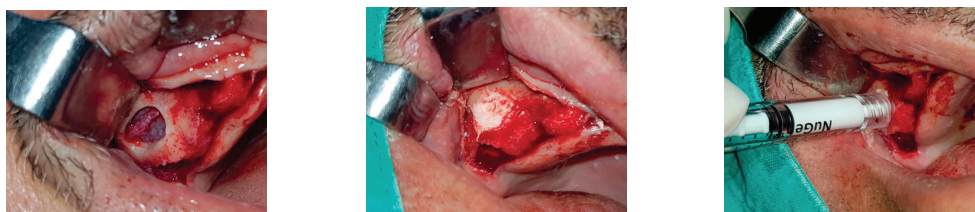
- The flap should be minimally reflected to open up whole graft site.
- Prepare the defect site for grafting

#### B Biongraft Putty application

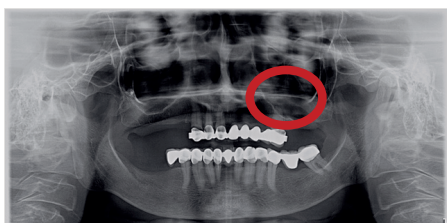
- Inject the Biongraft Putty and press gently for 5 seconds to get the defect shape sterile dry gauze.

#### C Flap Closure

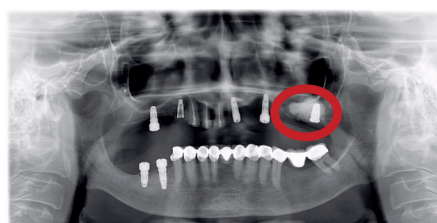
- Reposition the flap and suture them for maximal closure.



Use of Biongraft Putty in sinus lifting operation.



A- Before grafting procedure



B- 5 months after grafting procedure

The sinus defect filled with **Biongraft Putty** heals completely after 5 months. Radiological view of before and after grafting application. As it is seen, bone tissue completely regenerated and dental implant was successfully placed.

### Specifications

REFERENCE CODE	DESCRIPTION	VOLUME	PACKAGING
TBGDP050	Putty(Syringe 0.50cc)	0,5 cc	1 unit/Box
TBGDP075	Putty(Syringe 0.75cc)	0,75 cc	1 unit/Box
TBGDP100	Putty(Syringe 1 cc)	1 cc	1 unit/Box



Produced Exclusively for

**EOS**

MEDICAL SOLUTIONS

10, Kassiopis Str., 17237,  
Ymittos, Greece  
Email: [info@eosmed.eu](mailto:info@eosmed.eu)  
Website: [www.eosmed.eu](http://www.eosmed.eu)  
Tel: +302160033602

**CE**  
1783